



Beyond  
the  
Beauty:

Central Office : Tehran , Valiasr St. (Aj),  
Imam Khomeini intersection (RA) , No. 1085 , Third Floor  
Factory : Isfahan , Km. 5 Azadegan highway  
Phone : 021\_66978661  
\_ Fax : 021 66978661  
E-mail : info.mohammadico@gmail.com  
Website : www.tikhandle.com

**ORG IRAN**

**TIKHANDLE**®  
Since 1999  
**General Catalog**  
2022  
VER:1



دستگیره تیک

Beyond the  
Beauty...



*Beyond the beauty...*

**Getting a grip on architecture:  
It's in your hands.**

*Tose yaragh kakhodayan Co., Has been established for give service to the Iranian industry on 1999.*

*This company has started producing diferent industrial pieces from industrial robots, polish and polisher.*

*Professional molding in the field of fastening (door handles) producing die-cast molds including hot and cold chamber, the production of robotic products and packs. This company has been coined a new brand named: TIKHANDLE © on 2015 that almost all of the best international quality.*

*In fact the purpose of Andishe Top Isfahan Co, is producing high quality and updated products with the mostinexpensive price to offer.*

*We are hopeful that our company could have share in the development of our Iran!*



*We growing our design excellence, we have never ceased refining our manufacturing processes either: an ongoing policy of modernizing and optimizing production technologies and routines has colluded with our predilection for "feisty" materials like finegrade steel, aluminium, brass, ZAMAK and bronze to ensure our products last far longer than ought to be to our liking from a business economics point of view.*

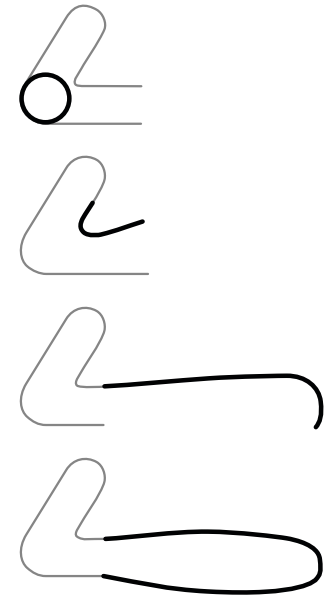
**Publishers with a sideline in door handles**

*We again took our future into our own hands in the 2000's. Under the intellectual guidance oaf designers, we*

*subjected our activities to critical analysis and in the process came up with a series of guiding principles that are still valid today.*

*A fundamentally new design culture was born that, as well as addressing itself to the company's origins and tradition, is also rooted in the cultural history of handles in particular and the concept of holding things in general.*

*Mr. Aicher devised his "Four-Point Guide to Good Grip, for us, which states that any good handle will feature a thumb rest, a forefinger furrow, support for the palm, and sufficient gripping bulk. As an outcrop of the process of critical analysis and reorientation was the edition of books that now are part of the standard repertoire of some college design programs.*





## TERMS & CONDITIONS

### Prices

Please note that all list prices given in this guide are in US dollars.

### Freight

Tehran, Iran

### Terms

Payment in full required  
by Cash

### Acknowledgements

When TIKHANDLE receives an order an "Order Acknowledgment" is issued to the customer which details the order and gives the expected shipment date. Please check the items and pricing on the acknowledgement thoroughly to ensure accuracy.

### Returns

Provided goods are in saleable condition, TIKHANDLE accepts returns of stock items for a restocking charge of 45% with a \$ 75.00 minimum.

Please contact TIKHANDLE in writing for a "Return Goods

Authorization" (RGA). Goods are only credited if a customer has been issued a RGA and the goods are received in saleable condition.

Once the goods are received, TIK will issue a credit memo, which can be applied to your next payment.

If the items are not returned within 45 days, the RGA is voided. Custom special order products are not returnable.

### Order Cancellations

TIK will do our best to accommodate order changes and or cancellations prior to production. Orders in production cannot be modified or cancelled.

### Product Warranties and Liability

There is a \$ 75 minimum order requirement. Orders for parts will be allowed below the minimum order size but will be invoiced at full list price.

No discount will apply.

### Standard Discount

Standard discount is 5% off current published list price. All parts are sold at standard discount regardless of customer buying program.

### Names wanted (but not for dropping)

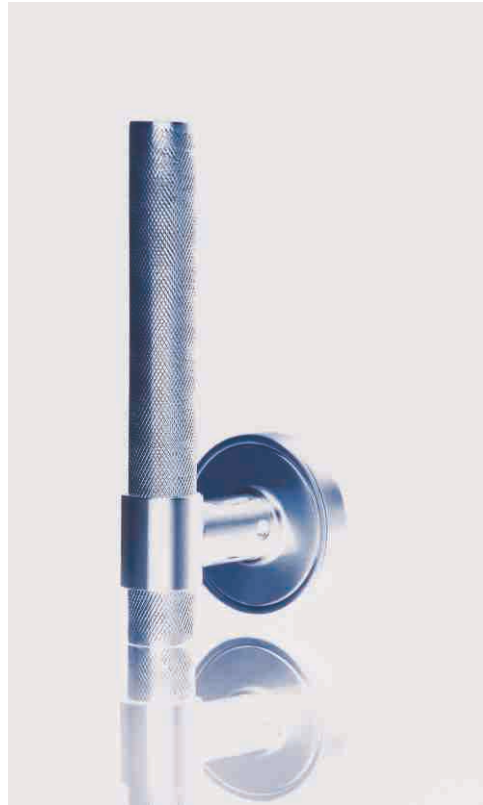
Our legendary Door Handles Workshop held in 2015 at our facility in Isfahan, Iran. was attended by celebrities sent out quite a shock wave.

Even those who had previously managed to grasp the world without TIKHANDLE were soon cognizant with the workshop findings. Overnight, a product that had long been considered of little interest was turned into a design theme by one of the first "name design" projects. Architects and designers now started to apply lock designs to support their creative visions.

### It all started with cabinet fittings

TIKHANDLE were exceedingly modern at the time and our founder was good at catering to prevailing trends: by the turn of the century his product offering already filled a handy catalogue.

the proud TIKHANDLE brand was born. Then as now, a key focus of its trade concerned classic hardware for doors and windows.



## Product Warranties and Liability

1. All goods sold are warranted to be free from defects in material and workmanship, the foregoing comprise seller's sole and entire warranty provided:

a) The Company has been notified within the time frame from the purchase date from TIKHANDLE as listed under "Term" in the chart below, and been given the opportunity of inspection by return of any alleged defective Product to the Company, free and clear of all liens and encumbrances, transportation prepaid, accompanied by the statement of defects and proof of purchase: and

b) The Product has not been modified, abused, misused, or improperly installed, maintained and/or repaired during such period. All other warranties, written or oral, expressed or implied, and including but not limited to warranties of merchantability or fitness for intended purpose, are expressly excluded.

2. Seller's sole obligation under these warranties, during the period after date of manufacture as listed below, shall be to issue credit, repair or replace any item or part thereof, which is proved to be other than as warranted. Seller shall have the sole right to determine whether such parts shall be repaired or replaced or whether credit shall be issued. No allowances shall be made for any labor charges for replacement of parts, adjustments or repairs, or any other work.

In no event shall seller be liable for collateral or consequential damages.

3. We do not warrant against defects caused by improper installation nor against the consequences of uses for which our products were not designed, especially if an TIK lever handle is used with a non TIK component part such as a mortise lock or tubular latch other than recommended.

Our warranty shall only apply if, and to the extent that the purchaser can show that the TIKHANDLE Product itself was defective and the defect was not related to alteration or to adverse effects of such use with a non TIK Product or components.

4. If goods are claimed to be other than as warranted, seller, upon notice promptly given, will either examine the goods at the buyer's site or issue shipping instructions for return to seller (transportation costs prepaid by buyer). These warranties shall not extend to any goods or parts thereof which have been subjected to misuse or neglect, damage by accident, rendered defective by reason of improper installation or by the performance of repairs, modifications or attachment to other products outside of seller's plant.

### Care/Cleaning

Stainless steel needs to be cleaned for aesthetic considerations and to preserve corrosion resistance. Stainless steel is protected from corrosion by a thin layer of chromium oxide. Oxygen from the atmosphere combines with the chromium in the stainless steel to form this passive chromium oxide film that protects from further corrosion. Any contamination of the surface by dirt, or other material, hinders this passivation process and traps corrosive agents, reducing corrosion protection. Thus, some form of routine cleaning is necessary to preserve the appearance and integrity of the surface.

Stainless steel surfaces thrive with frequent cleaning because there is no surface coating to wear off. A soft cloth and clean warm water should always be the first choice for mild stains, loose dirt and soil. For more aggressive cleaning, a small amount of vinegar can be added to warm water. A final rinse with clean water and a dry wipe will complete the process and eliminate the possibility of water spots. Cleaning with solutions containing chlorine, such as acetone, methyl alcohol, and mineral spirits must be avoided. Brass and Bronze are both copper alloys (Brass is copper and zinc, Bronze is copper and tin) and when exposed to air and moisture, they will develop a greenish layer of build-up on its surface called patina. While this darkened finish does add character to the brass and bronze, some consider it unsightly, and would prefer their bronze to look clean and shiny. To clean the patina, rinse the brass or bronze

with warm water and dry thoroughly to remove dust and particles. Mix two tablespoons of baking soda and a teaspoon of lemon juice until a soft paste forms. Wearing rubber gloves apply the paste with a polishing cloth and rub in small circular motions and repeat until the desired effect is reached. Let sit for 20 to 30 minutes and then rinse with thoroughly with warm water to remove the paste. Buff dry with clean towel. If patina still remains repeat process. Cleaning with solutions containing chlorine, such as acetone, methyl alcohol, and mineral spirits must be avoided.

Aluminum is the earth's most abundant metal element and is used for a wide array of applications ranging from aircraft skins to baseball bats. Anodizing provides aluminum a very durable, corrosion resistant, and long lasting finish. To clean, squeeze one or two drops of mild dish washing detergent into a cup of water. Apply the soapy water to a sponge and scrub the aluminum surface vigorously. Rinse the anodized aluminum surface with clean water and then dry it with towels. Cleaning with solutions containing harsh acidic or alkaline cleaners as they may destroy your finish and should be avoided.

## Ordering Guidelines

To place an order direct with TIKHANDLE please email: [info.mohammadico@gmail.com](mailto:info.mohammadico@gmail.com)

You can also watch a video on how to create an TIK Ordering String on our YouTube Channel.

Watch the video by clicking on this link or typing this into your web-browser: [tikhandle.com/orderdesk](http://tikhandle.com/orderdesk)

When ordering locksets such as an KEYS door handles you will use a numbering string as shown in our example below.

### Example: Standard Keys Lock – K

## Materials & Finishes

TIKHANDLE Hardware is available in nine (9) finishes from our three series of door furniture: Modern, Classic, Luxury.

We invite you to contact us if you have special color requirements.

Our finishes are listed on next page showing the base material and the color code for natural, anodized, and plated finishes.

On the following pages the finish illustrations are close approximations of the actual finish.

TIKHANDLE offers physical finish samples should you require this for your decision-making process.

Our finishes are listed showing the base material and the color code for natural, anodized, and plated finishes.

On the following pages the finish illustrations are close approximations of the actual finish. TIKHANDLE offers physical finish samples should you require this for your decision-making process.

- K \_\_\_\_\_ Lock Type
- HO \_\_\_\_\_ Lock Function
- 10 \_\_\_\_\_ Lever Design
- R \_\_\_\_\_ Trim Set
- M \_\_\_\_\_ Series
- Z \_\_\_\_\_ Material
- RH \_\_\_\_\_ Handing
- 1 \_\_\_\_\_ Finishes
- 60 \_\_\_\_\_ Door Thickness

## Simple Codes



Material: ZAMAK Alloy  
Certificate: CE  
Warranties: 8 Years



Material: Stainless Steel  
Certificate: CE  
Warranties: 8 Years



Material: Brass  
Certificate: CE  
Warranties: 10 Years



Material: Aluminium  
Certificate: CE  
Warranties: 8 Years

- Polished Gold
- Satin Gold
- Bright Chrome
- Satin Nickel
- Satin Black
- Olive
- Satin Orange
- Black Matte
- Gray
- White Matte

## RESEARCH

Throughout two decades TIKHANDLE has built a heritage of handcraftsmanship and precious abilities still used today, feeling confident about, feeling confident about the future with the same spirit of the very first day.

This is the power that drives the company to reach higher, to produce new high tech models and to accept new challenges.

All along the producing chain, no matter if forging, polishing or branding, the power of experience and the courage of ambition give birth to a product, which is much more than a simple furnishing accessory: it is a philosophy, a business idea, a way of conceiving work.

The style of TIKHANDLE. he future with the same spirit of the very first day.

This is the power that drives the company to reach higher, to produce new high tech models and to accept new challenges.

All along the producing chain, no matter if forging, polishing or branding, the power of experience and the courage of ambition give birth to a product, which is much more than a simple furnishing accessory: it is a philosophy, a business idea, a way of conceiving work. The style of TIKHANDLE.

## Warranties

*TIKHANDLE, thanks to the high-quality of the materials and the new technologies in production, gives a special warranty on its products.*

*Warranty terms have been extended, departing from the date of purchase, according to the finishes as follows:*

- Stainless Steel: 8 Years;
- ZAMAK: 8 Years
- Brass: 10 Years.
- Aluminium: 4 Years.
- Mortice lock: Life time Guarantee

*Warranty provides, at discretion of Central Office, the repair or the replacement of defective product free of charge, during warranty period.*

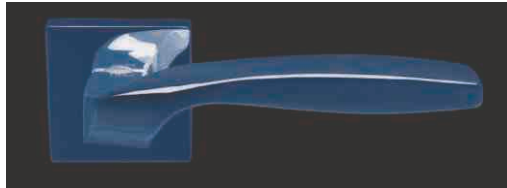
*Should any product become discontinued, Central Office reserves the right to replace it with similar product or to refund original purchase cost. Determination of causes, responsibilities and presence of manufacturing defects will be at discretion of sole TIKHANDLE. Dispatch cost for this evaluation will be at purchaser charge. Once verified Central Office TIKHANDLE responsibility and warranty terms compliance, other costs as additional material dispatch and its return back to client, will be at Central Office charge. TIKHANDLE will not be liable in any case of installation, repair and replacement costs as of loss or damages.*



© tik\_doorhandle



10 Series



Polished Gold  
1022



Polished Gold  
1022P  
door handle



Satin Gold  
1032P  
door handle



Satin Nickel  
1042P  
door handle

FINISHES



Olive  
1032



Satin Nickel  
1042



Bright Chrome  
1052



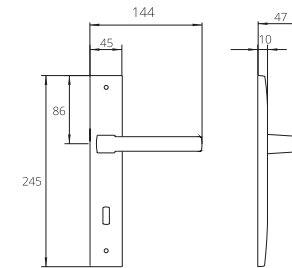
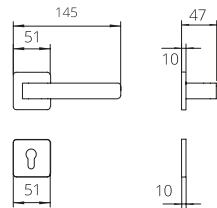
Black  
1072



Satin Nickel  
1042R  
door-handle on rose

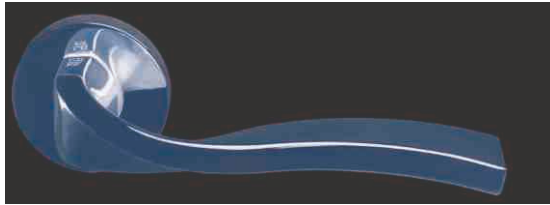


Satin Nickel  
1041P  
door handle





20 Series



Polished Gold  
2022



Satin Gold  
2012P  
door handle

Olive  
2032P  
door handle

FINISHES



Olive  
2032

Satin Nickel  
2042



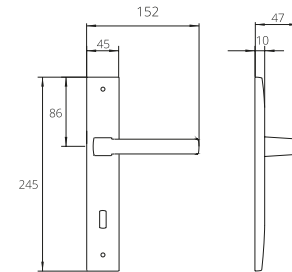
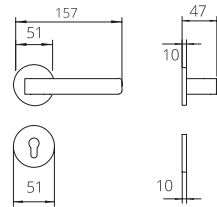
Satin Nickel  
2042R  
door-handle on rose



Bright Chrome  
2052



Black  
2072





CLASSIC  
DESIGN



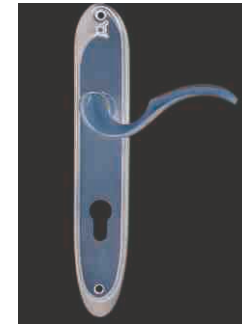
## 30 Series



Polished Gold  
3022



Satin Gold  
3012P  
door handle

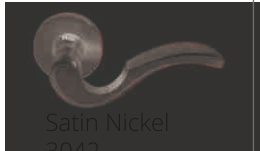


Olive  
3032P  
door handle

### FINISHES



Olive  
3032



Satin Nickel  
3042



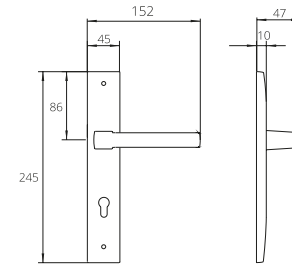
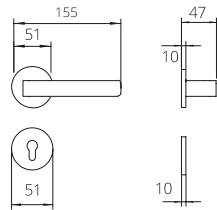
Bright Chrome  
3052



Black  
3072



Satin Nickel  
3042R  
door-handle on rose









## 40 Series



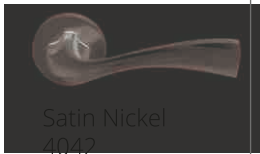
Polished Gold  
4022



### FINISHES



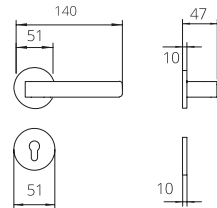
Olive  
4032



Satin Nickel  
4042



Satin Nickel  
4042R  
door handle on rose

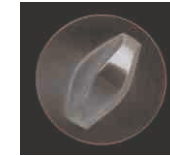


Standard Rosset  
42R: *Satin Nickel*  
Other Finishes:

12R: *Satin Gold* / 22R: *Polished Gold* / 32R: *Olive* / 52R: *Bright Chrome*



Keyhole Rosset  
41R: *Satin Nickel*



Bathroom Rosset  
43R: *Satin Nickel*



MODERN  
DESIGN

80 Series



Polished Gold  
8022



FINISHES



Olive  
8032



Satin Nickel  
8042



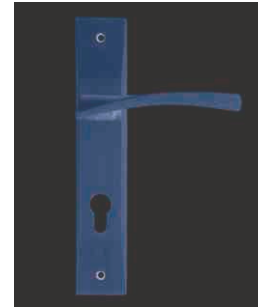
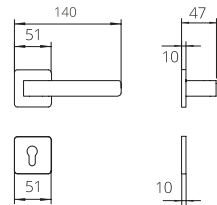
Black  
8072



Gray  
8082



Gray  
8082  
*door-handle on rose*



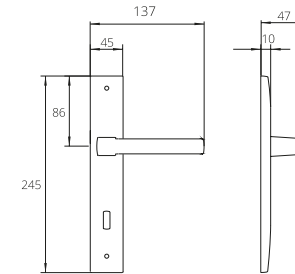
Satin Gold  
8021P  
*door handle*



Black  
8072P  
*door handle*



Satin Nickel  
8043P  
*door handle*





MODERN  
DESIGN

90 Series



Polished Gold  
9022



FINISHES



Olive  
9032



Satin Nickel  
9042



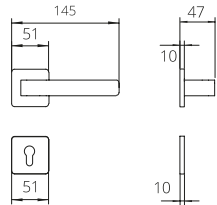
Black  
9072



Gray  
9082



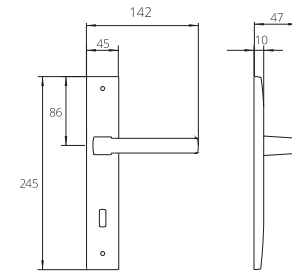
Satin Nickel  
9042R  
*door handle on rose*



Polished Gold  
9022P  
*door handle*

Olive  
9032P  
*door handle*

Satin Nickel  
9042P  
*door handle*

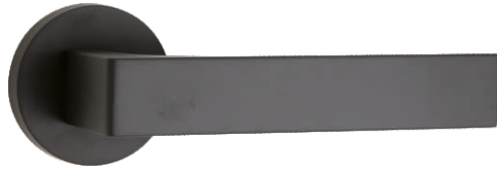




MODERN  
DESIGN



## 12 Series



Black  
1272



### FINISHES



Polished Gold  
1222



Olive  
1232



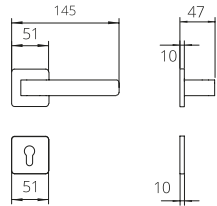
Satin Nickel  
1242



Gray  
1282



Black  
1272R  
*door handle on rose*



Standard Rosset  
42R: *Satin Nickel*  
Other Finishes:

12R: *Satin Gold* / 22R: *Polished Gold* / 32R: *Olive* / 52R: *Bright Chrome*

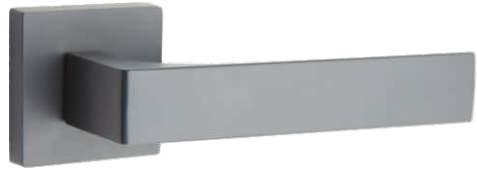


Keyhole Rosset  
41R: *Satin Nickel*



Bathroom Rosset  
43R: *Satin Nickel*

## 13 Series



Gray  
1382



### FINISHES



Polished Gold  
1322



Olive  
1332



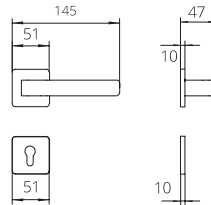
Satin Nickel  
1342



Black  
1372



Black  
1372R  
*door handle on rose*



Standard Rosset  
42R: *Satin Nickel*  
Other Finishes:

12R: *Satin Gold* / 22R: *Polished Gold* / 32R: *Olive* / 52R: *Bright Chrome*



Keyhole Rosset  
41R: *Satin Nickel*



Bathroom Rosset  
43R: *Satin Nickel*



CLASSIC  
DESIGN

50 Series



Polished Gold  
5022



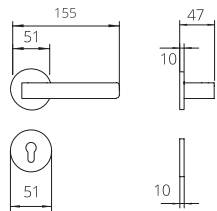
FINISHES



Olive  
5032



Olive  
5032  
door handle on rose



Standard Rosset  
42R: *Satin Nickel*  
Other Finishes:  
12R: *Satin Gold* / 22R: *Polished Gold* / 32R: *Olive* / 52R: *Bright Chrome*



Standard Rosset  
22R: *Polished Gold*



Olive Rosset  
32R: *Olive*



Diamond 6022R  
Gold  
*Door Handle*

ⓑ ⒸⒺ ⑩



Diamond 6032R  
Olive  
*Door Handle*

ⓑ ⒸⒺ ⑩



Diamond 6032R  
Olive  
*Door Handle*

60 Series



Polished Gold  
6022



FINISHES



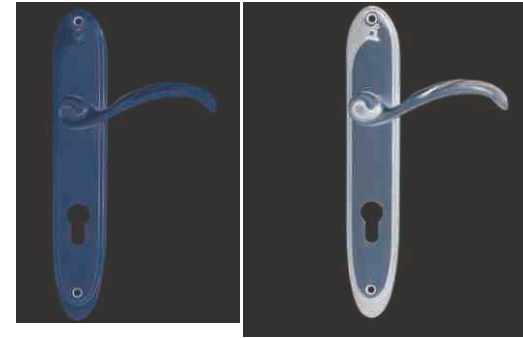
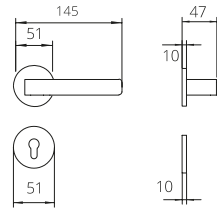
Polished Gold  
6022



Olive  
6032



Olive  
6032  
*door handle on rose*

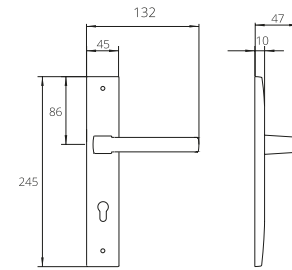


Satin Gold  
6012P

*door-handle on back plate*

Olive  
6032P

*door-handle on back plate*





MODERN  
DESIGN

## 14 Series



Satin Gold  
1412



### FINISHES



Olive  
1432



Satin Nickel  
1442



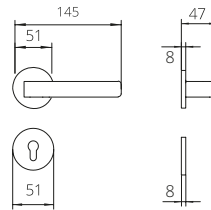
Black  
1472



Gray  
1482



Satin Nickel  
1442  
*door-handle on rose*



Standard Rossets

42R: *Satin Nickel*

Other Finishes:

12R: *Satin Gold* / 22R: *Polished Gold* / 32R: *Olive* / 52R: *Bright Chrome*

In the new rosette, the thickness is reduced, which makes the door more beautiful and coordinated. This feature is used in high-thick doors, and instead of an 8 cm cylinder lock, a 7 cm cylinder lock is used.



## 14T Series



Satin Gold  
1412T



### FINISHES



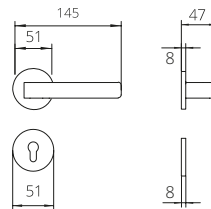
Olive  
1432T



Satin Nickel  
1442T



Satin Nickel  
1442T  
*door-handle on rose*



Standard Rossets

42R: *Satin Nickel*

Other Finishes:

12R: *Satin Gold* / 22R: *Polished Gold* / 32R: *Olive* / 52R: *Bright Chrome*

In the new rosette, the thickness is reduced, which makes the door more beautiful and coordinated. This feature is used in high-thick doors, and instead of an 8 cm cylinder lock, a 7 cm cylinder lock is used.



MODERN  
DESIGN

## 15 Series



Olive  
1532



### FINISHES



Satin Nickel  
1542



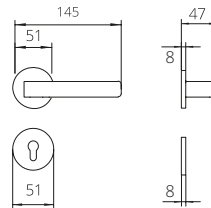
Black  
1572



Gray  
1582



Satin Nickel  
1542  
*door-handle on rose*



Standard Rossets

42R: *Satin Nickel*

Other Finishes:

12R: *Satin Gold* / 22R: *Polished Gold* / 32R: *Olive* / 52R: *Bright Chrome*

In the new rosette, the thickness is reduced, which makes the door more beautiful and coordinated. This feature is used in high-thick doors, and instead of an 8 cm cylinder lock, a 7 cm cylinder lock is used.



MODERN  
DESIGN

## 16 Series



Polished Gold  
1612



### FINISHES



Olive  
1632



Satin Nickel  
1642



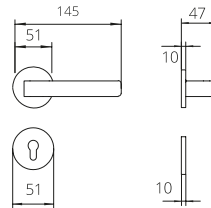
Black  
1672



Gray  
1682



Satin Nickel  
1642  
*door-handle on rose*



Standard Rossetts

42R: *Satin Nickel*

Other Finishes:

12R: *Satin Gold* / 22R: *Polished Gold* / 32R: *Olive* / 52R: *Bright Chrome*

In the new rosette, the thickness is reduced, which makes the door more beautiful and coordinated. This feature is used in high-thick doors, and instead of an 8 cm cylinder lock, a 7 cm cylinder lock is used.



CLASSIC  
DESIGN



1122P  
Gold  
*Material: Zamak*



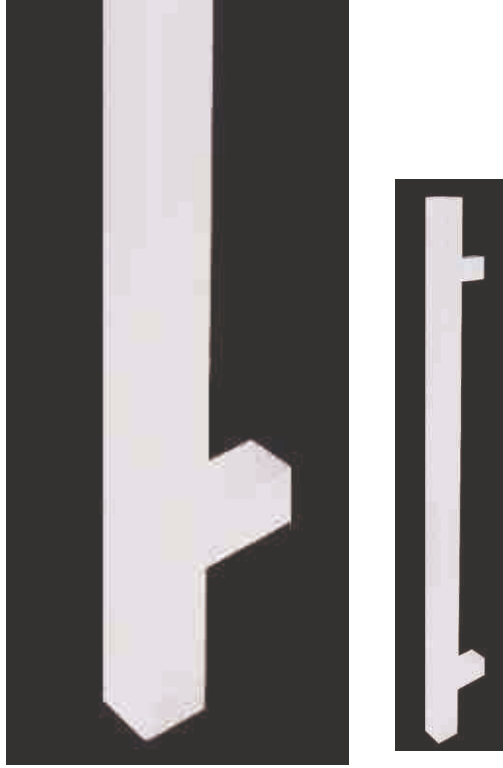
1132P  
Olive  
*Material: Zamak*





PULL  
HANDLES



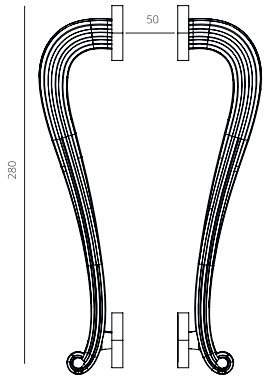
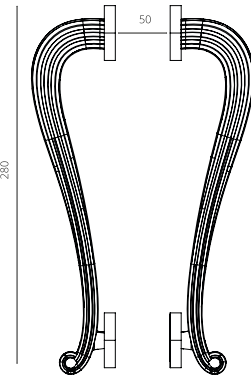


AL-A ( Aluminium )  
Black  
*Entrance Door Handle*  
*Size: 50cm, 80cm, 120cm*  
*Back to back pull handle*



AL-B ( Aluminium )  
Black  
*Entrance Door Handle*  
*Size: 50cm, 80cm, 120cm*  
*Back to back pull handle*





PH-S283  
Olive  
Entrance Door Handle  
Size: 28 cm



PH- S281  
Satin Gold  
Entrance Door Handle  
Size: 28 cm



PH-S287  
Black  
Entrance Door Handle  
Size: 28 cm



PH-S284  
Satin Nickle  
Entrance Door Handle  
Size:28 cm



# *Tik Brass*

*"Art enables us to find ourselves and lose ourselves at the same time."*

— Thomas Merton, *No Man Is an Island*



LUXURY  
DESIGN



Milan R 22  
Gold  
*Door Handle on rose*



Milan R 32  
Black  
*Door Handle on rose*



*Tik Brass*



Luxury Design



802-Oak head  
Polished Gold  
Entrance Door Handle  
80 cm

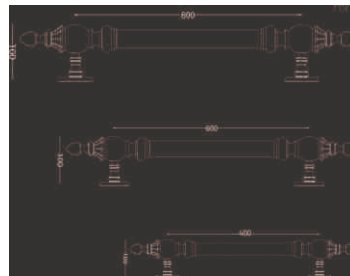
Other Available Finishes:  
XX3: Olive



802L-Oak head  
Polished Gold  
Entrance Door Handle  
80 cm

Other Available Finishes:  
XX3: Olive

(B) (CE) (10)



602-Oak head  
Polished Gold  
Entrance Door Handle  
60 cm

402-Oak head  
Polished Gold  
Entrance Door Handle  
40 cm

Other Available Finishes:  
603,403,803: Olive



602L-Oak head  
Polished Gold  
Entrance Door Handle  
60 cm

402L-Oak head  
Polished Gold  
Entrance Door Handle  
40 cm

Other Available Finishes:  
603,403,803: Olive



# Tik Brass

CUSTOM MODE

King Stone 402  
Polished Gold  
*Entrance Door Handle*



King 402  
Olive  
*Entrance Door Handle*  
40 cm  
  
*Other Available Finishes:*  
*Polished Gold*  
*Satin Gold*

King 602  
Olive  
*Entrance Door Handle*  
60 cm  
  
*Other Available Finishes:*  
*Polished Gold*  
*Satin Gold*

King 802  
Olive  
*Entrance Door Handle*  
80 cm  
  
*Other Available Finishes:*  
*Polished Gold*  
*Satin Gold*



King 802  
Polished Gold  
*Entrance Door Handle*



King 402  
Polished Gold  
*Entrance Door Handle*  
40 cm  
*Other Available Finishes:*  
*Olive*  
*Satin Gold*

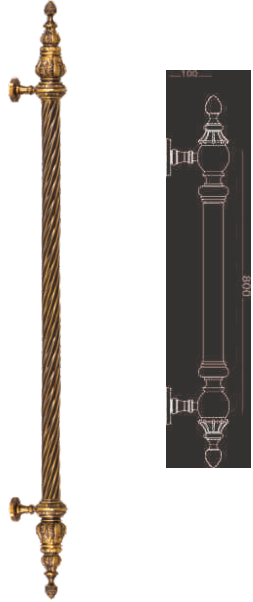


King 602  
Polished Gold  
*Entrance Door Handle*  
60 cm  
*Other Available Finishes:*  
*Olive*  
*Satin Gold*



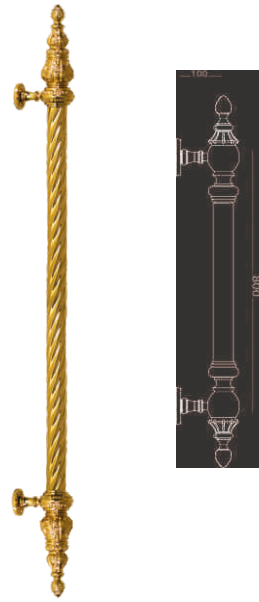
King 802  
Polished Gold  
*Entrance Door Handle*  
80 cm  
*Other Available Finishes:*  
*Olive*  
*Satin Gold*

Luxury Design



Royal-803  
Olive  
*Entrance Door Handle*  
*Back to back pull handle*

Ⓟ Ⓢ Ⓣ



Royal-802  
Polished Gold  
*Entrance Door Handle*  
*Back to back pull handle*

Ⓟ Ⓢ Ⓣ



*Royal-802*  
*Polished Gold*  
*Entrance Door Handles*



# *Tik Brass*

*"Every child is an artist. The problem is how to remain  
an artist once he grows up."*

— Pablo Picasso



*Luxury Design  
Entrance Door Handles  
Available Finishes:  
803: Olive  
802: Polished Gold*

Luxury Door Handles



70

Monaco E1-02  
Polished Gold  
Entrance Door Handle

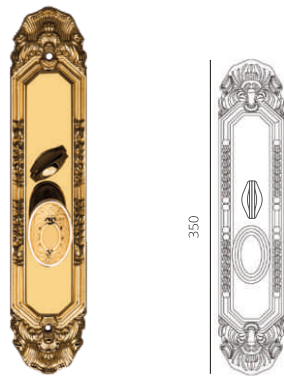
(B) (CE) (10)



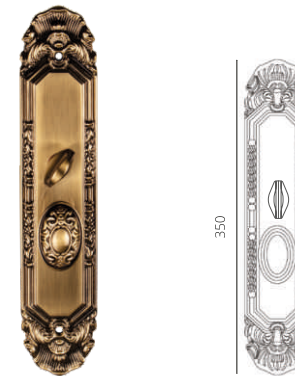
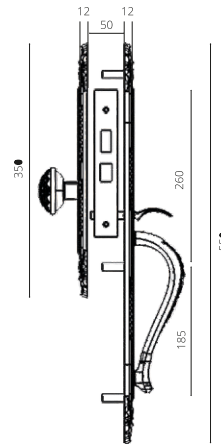
70

Monaco E1-03  
Olive  
Entrance Door Handle

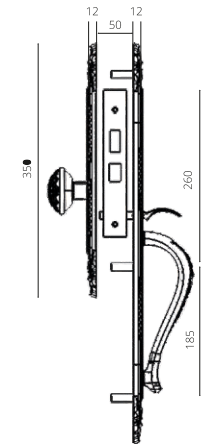
(B) (CE) (10)

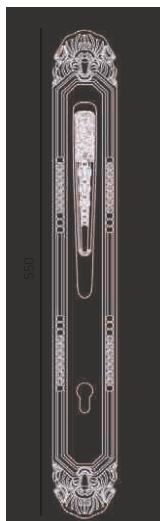


70



70





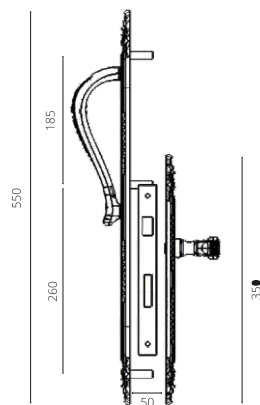
70



70

Monaco E2-02  
Polished Gold  
*Entrance Door Handle*  
*Other Finishes:*  
*Monaco E2-03 Olive*

(B) (CE) (10)



Beyond the  
Beauty...





72

Monaco EP 32  
Olive  
*Door Handle on rose*  
*Other Finishes:*  
*Monaco EP12 Patina , Ep22 Polished Gold*

(B) (CE) (10)



50

Monaco R 32  
Olive  
*Door Handle on rose*  
*Other Finishes:*  
*Monaco R12 Patina, R22 Polished Gold*

(B) (CE) (10)

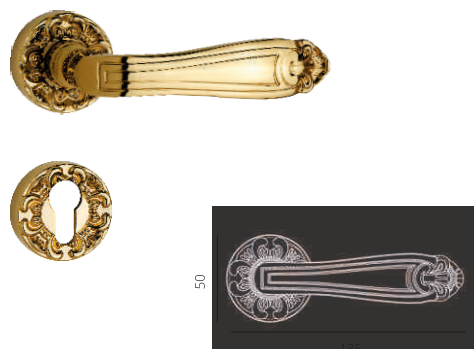
Monaco EP32  
Olive  
*Plate Door Handle*





Monaco EP 22  
Polished Gold  
*Door Handle on rose*  
*Other Finishes:*  
*Monaco EP12 Patina , Ep32 Olive*

(B) (CE) (10)



Monaco R 22  
Polished Gold  
*Door Handle on rose*  
*Other Finishes:*  
*Monaco R12 Patina, R32 Olive*

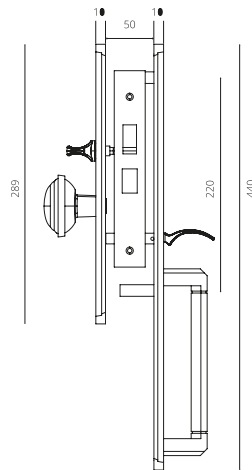
(B) (CE) (10)



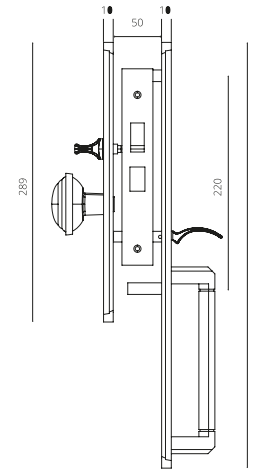
Monaco R22  
Polished Gold  
*Door Handle on rose*



Monaco E3-02  
Polished Gold  
Entrance Door Handle



Monaco E3-03  
Olive  
Entrance Door Handle

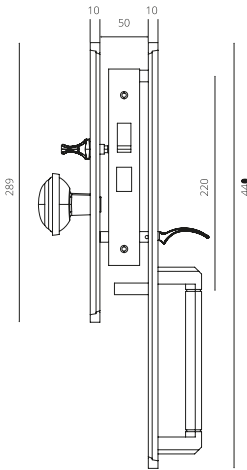






Monaco E3-04  
Satin Nickel  
*Entrance Door Handle*

ⓑ ⒸⒺ ⑩

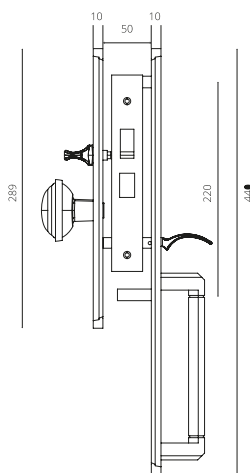


*"Everything you can imagine is real."*  
— Pablo Picasso



Monaco E3-07  
Black  
*Entrance Door Handle*

ⓑ ⒸⒺ ⑩



*"Everything you can imagine is real."*  
— Pablo Picasso



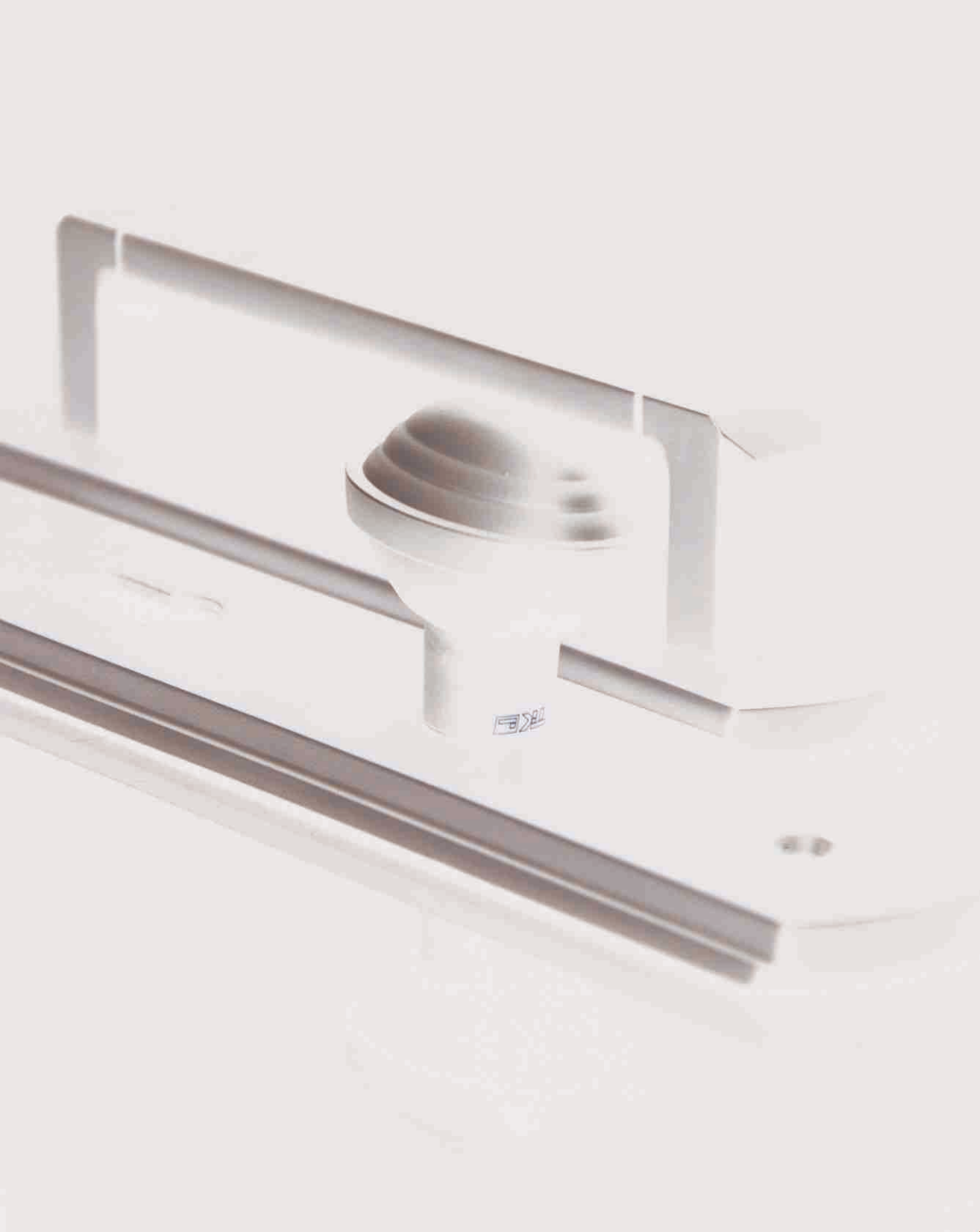


Monako E4-01  
Satin Gold  
*Entrance Door Handle*  
*Other Finishes:*  
*Monaco E4-02 Polished Gold, E4-03 Olive,*  
*E4-04 Satin Nickel, E4-07 Black*

Ⓟ Ⓢ Ⓣ



*"Everything you can imagine is real."*  
— Pablo Picasso



## *Tik Brass*

*"Everything you can imagine is real."*  
— Pablo Picasso



Monaco E4-01  
Satin Nickel  
*Entrance Door Handle*  
*Other Finishes:*  
*Monaco E4-02 Polished Gold, E4-03 Olive,*  
*E4-04 Satin Nickel, E4-07 Black*



Monaco E4-01  
Black  
*Entrance Door Handle*  
*Other Finishes:*  
*Monaco E4-02 Polished Gold, E4-03 Olive,*  
*E4-04 Satin Nickel, E4-07 Black*



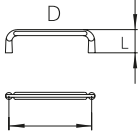


B Cabinet  
Polished Gold  
*Cabinet Handle*

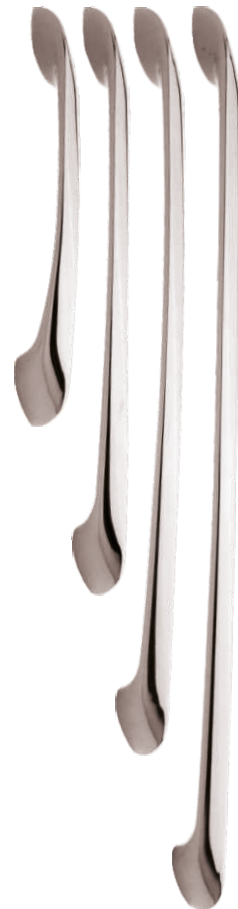
Cabinet  
Handle



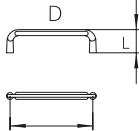
B Cabinet  
Polished Gold  
*Cabinet Handle*



	D	L
A	128	25
B	192	25
C	256	25
D	320	25



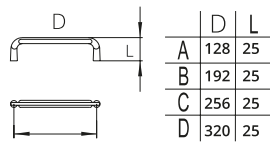
B Cabinet  
Bright Chrome  
*Cabinet Handle*



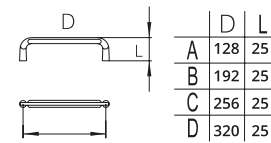
	D	L
A	128	25
B	192	25
C	256	25
D	320	25



B Cabinet  
Olive  
*Cabinet Handle*



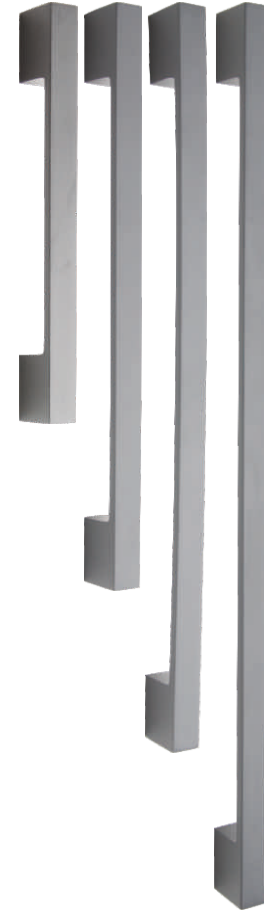
B Cabinet  
Satin Nickel  
*Cabinet Handle*





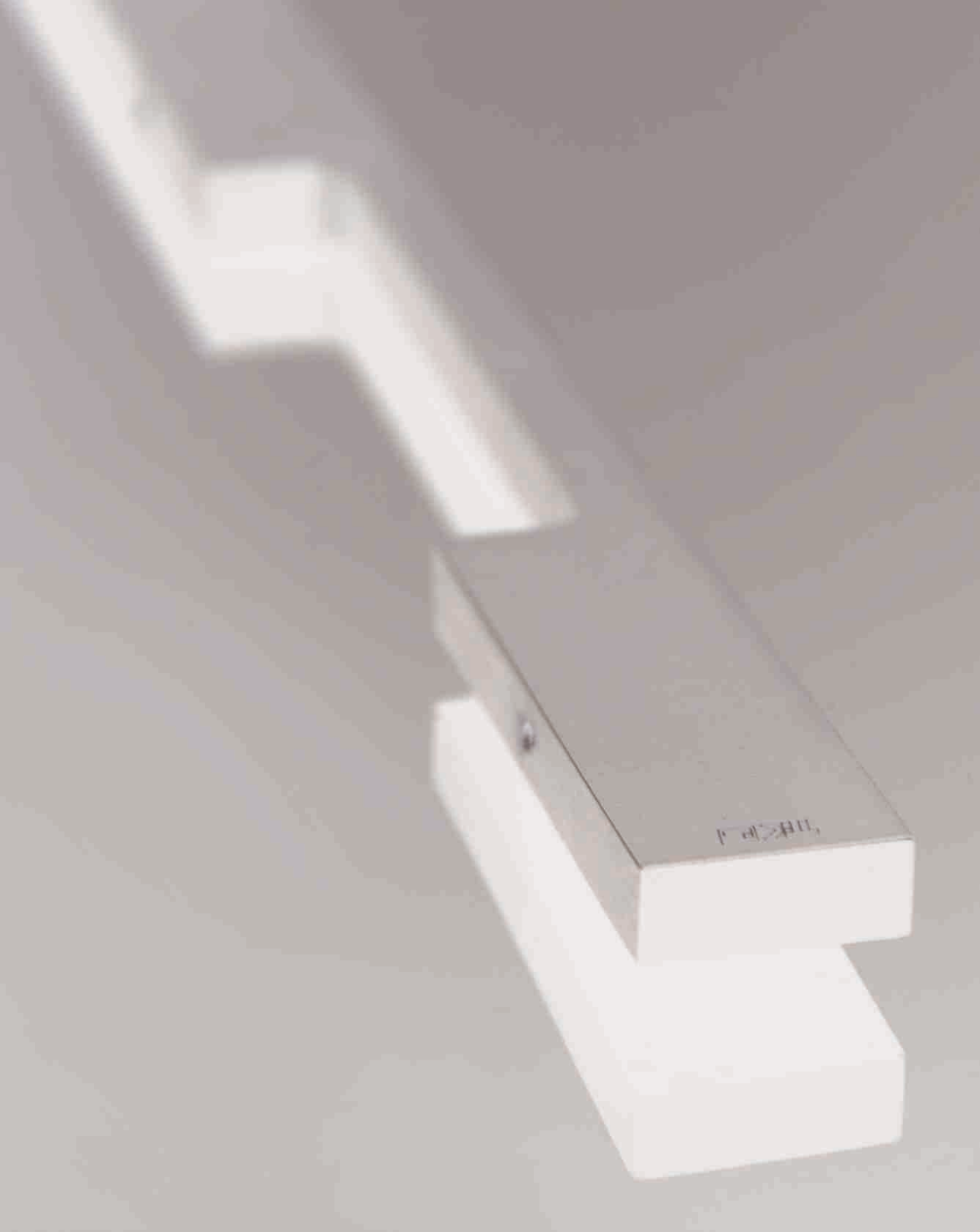
A Cabinet  
Black  
*Cabinet Handle*

	D	L
A	128	25
B	192	25
C	256	25
D	320	25



A Cabinet  
Gray  
*Cabinet Handle*

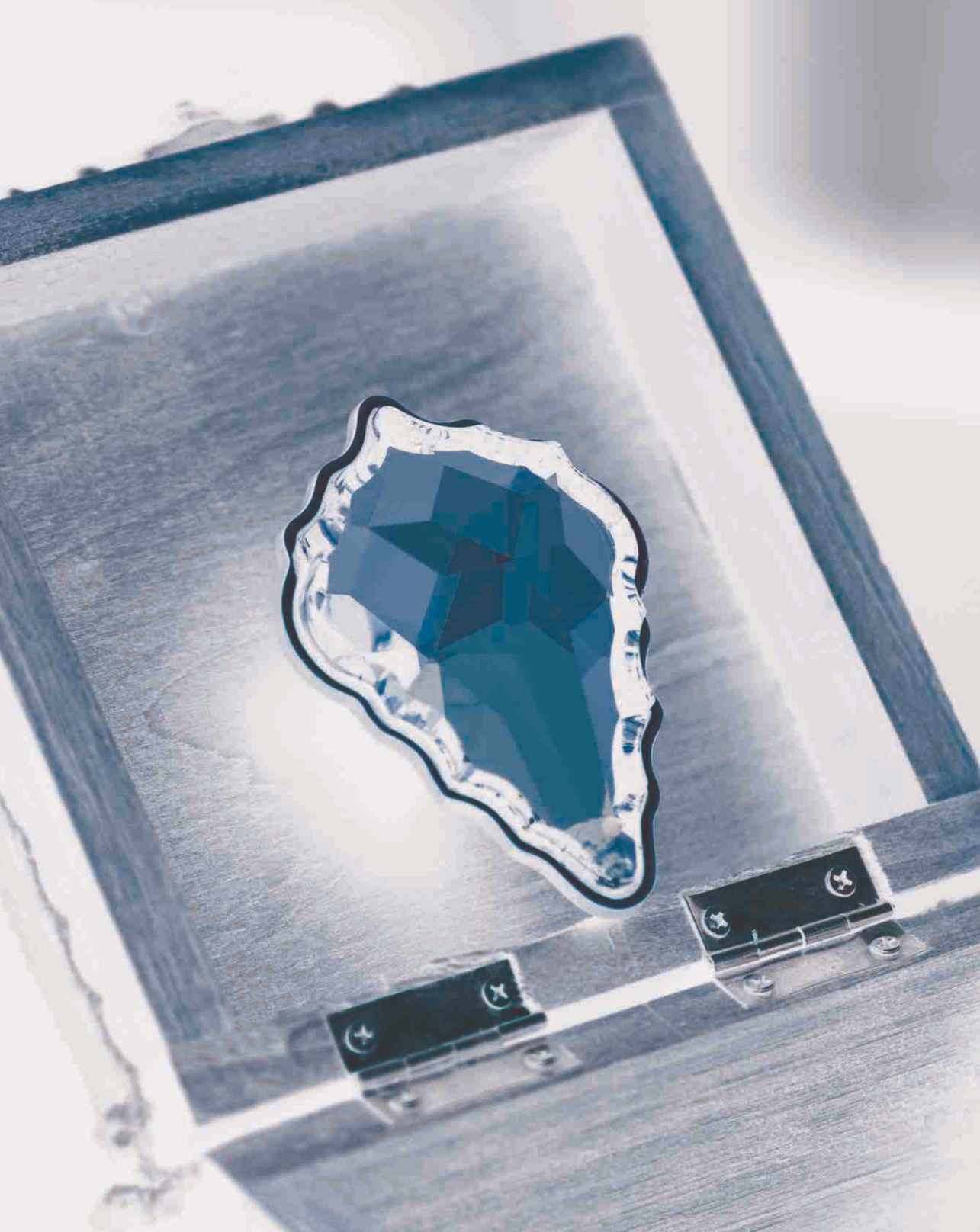
	D	L
A	128	25
B	192	25
C	256	25
D	320	25



H 120 - 07  
Gray  
*Cabinet Handle*  
120 cm

AL CE 8





## DIAMOND DESIGN



Diamond-05  
Bright Chrome  
Cabinet Handle  
*Other: Diamond-07  
Black*

(Z) (CE) (8)



Diamond-02  
Polished Gold  
Cabinet Handle  
*Other: Diamond-07  
Black*

(Z) (CE) (8)



Diamond-02  
Polished Gold  
Cabinet Handle  
*Other: Diamond-07  
Black*

(Z) (CE) (8)



PL 128-07  
Black  
*Cabinet Handle*



PL 128-02  
Polished Gold  
*Cabinet Handle*



PL 3.5\*3.5-07  
Black  
*Cabinet Handle*



PL 3.5\*3.5-02  
Polished Gold  
*Cabinet Handle*



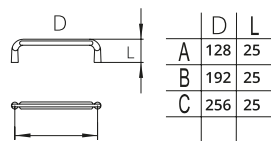
Diamond 50-128-02  
Polished Gold  
*Cabinet Handle*



Diamond 50-3.5\*3.5-02  
Polished Gold  
*Cabinet Handle*



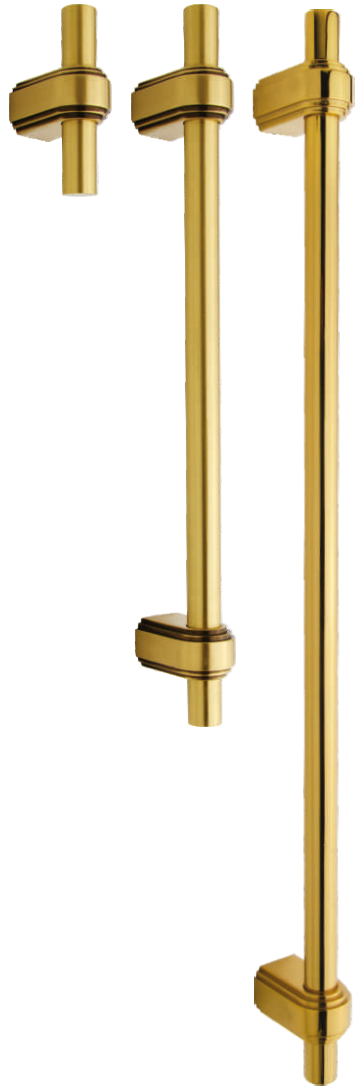
G Series  
Satin Gold  
Cabinet Handle  
Material: Brass



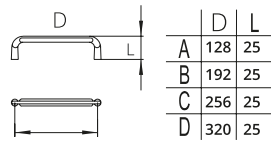
Ⓟ Ⓢ Ⓣ



G Series  
Satin Gold  
Cabinet Handle



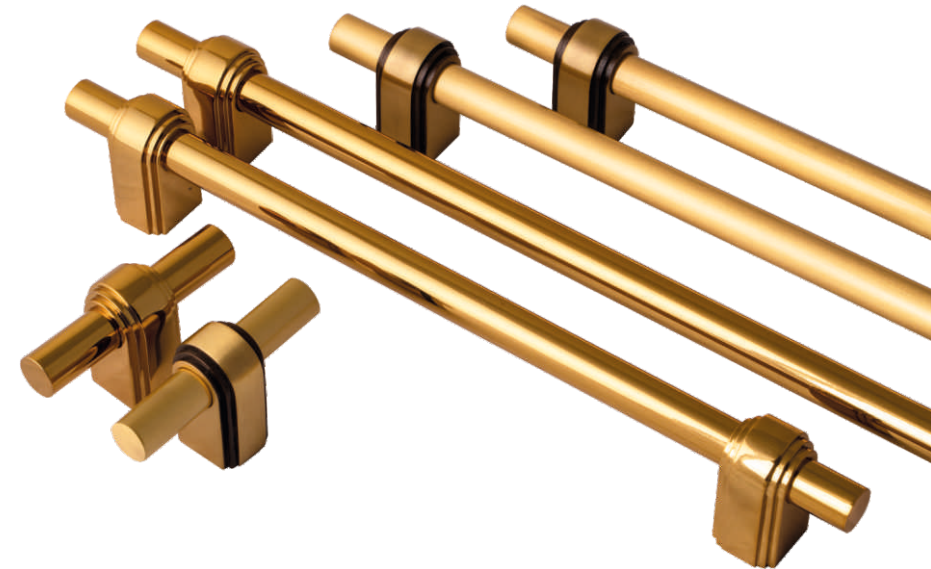
Rod Cabinet  
Satin Gold  
Cabinet Handle  
Material: Brass



S-64-01

S-128-01

S-128-01



Rod Cabinet  
Satin Gold  
Cabinet Handle



C-64-01  
Satin Gold  
Cabinet Handle  
Material: Zamak



C-64-03  
Olive  
Cabinet Handle  
Material: Zamak



C-64-07  
Black  
Cabinet Handle  
Material: Zamak



C-64-02  
Satin Nickel  
Cabinet Handle  
Material: Zamak



C-64-02  
Satin Nickel  
Cabinet Handle





Door Stopper



302  
Door Stopper  
*Material: Brass*

Ⓟ Ⓢ Ⓣ



303  
Door Stopper  
*Material: Brass*

Ⓟ Ⓢ Ⓣ

## Accessories & Complements

---



St102  
Polished Gold  
*Bumper behind the door*



St103  
Olive  
*Bumper behind the door*



St204  
Satin Nickel  
*Bumper behind the door*



St207  
Olive  
*Bumper behind the door*

## Accessories & Complements

---



CLW701  
Satin Gold  
*Bathroom Cylinder*



CLW702  
Polished Gold  
*Bathroom Cylinder*



CLW703  
Olive  
*Bathroom Cylinder*



CLW704  
Satin Nickel  
*Bathroom Cylinder*



CLW706  
Satin Chrome  
*Bathroom Cylinder*



CLW707  
Black  
*Bathroom Cylinder*



CLW708  
Gray  
*Bathroom Cylinder*





603  
Olive  
LOCK

## Mortice Lock

---



604  
Satin Nickel  
LOCK



603  
Olive  
LOCK

Axe: 60 ( 85 mm )



607  
Black  
LOCK



602  
Polished Gold  
LOCK

## Mortice Lock

---



454  
Satin Nickel  
LOCK



453  
Olive  
LOCK

Axe: 45 ( 70 mm )



457  
Black  
LOCK



452  
Polished Gold  
LOCK

## Mortice Lock

---



504  
Satin Nickel  
LOCK



503  
Olive  
LOCK

Axe: 50 ( 75 mm )



507  
Black  
LOCK



502  
Polished Gold  
LOCK

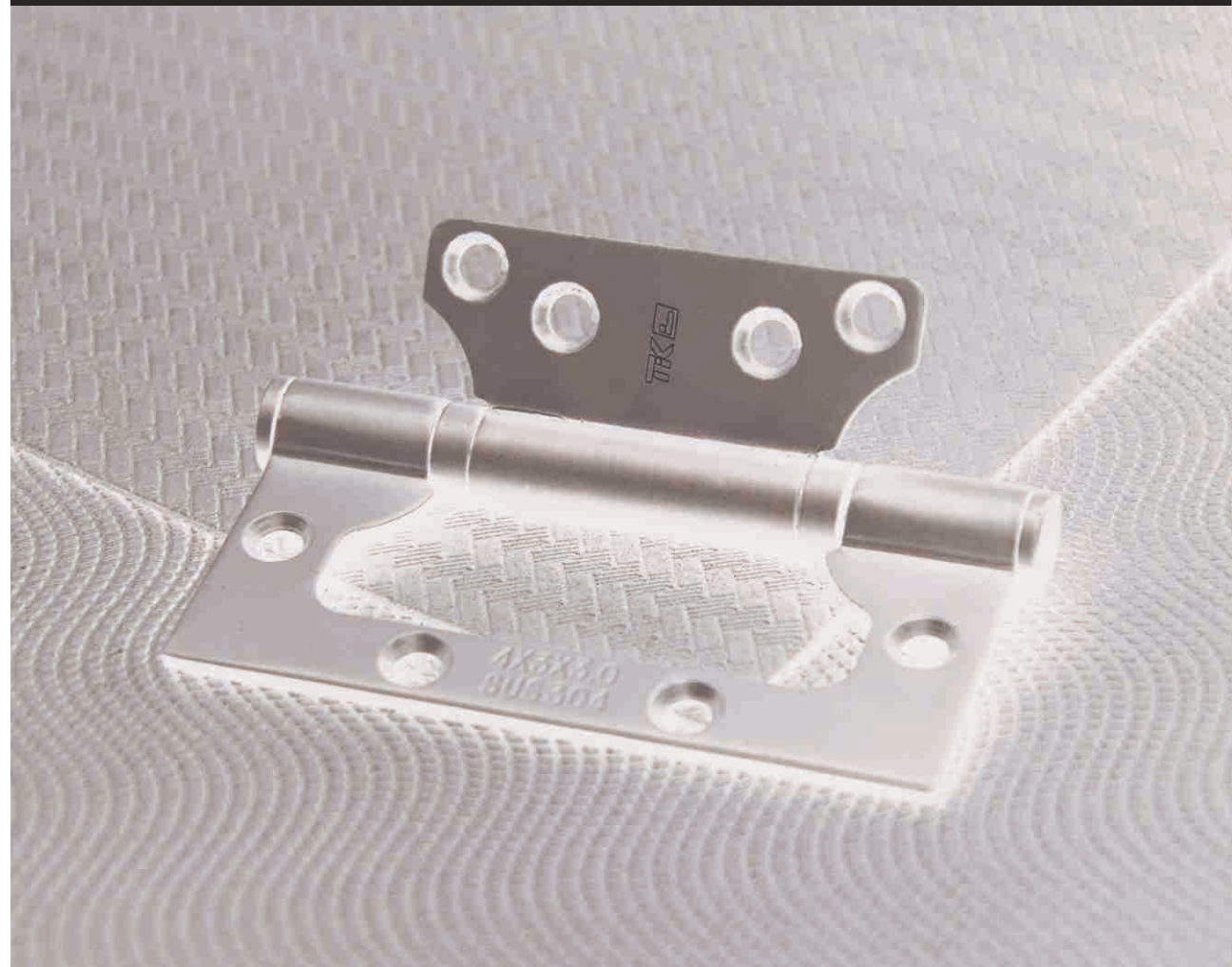
## Accessories & Complements

---



Hst 304 ( 4\*3\*3 )  
Material: Stainless Steel  
Black

*Other Available Finishes:  
Satin Nickel*



Hings

Hospital  
Soloution

## Hospital Soloution



Stainless Steel  
H42



Stainless Steel  
H42P  
*door-handle on back plate*



Stainless Steel  
H42E  
*door-handle on Entrance*

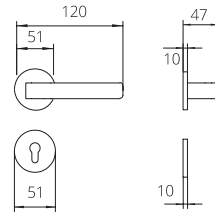
## STYLES



Stainless Steel  
H42LR  
*door-handle on rose*



Stainless Steel  
H42R  
*door-handle on rose*



Keyhole Rosset  
Stainless Steel













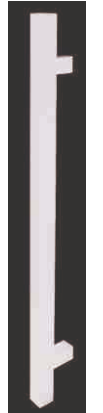






Bathroom Rosset  
Stainless Steel



Standard Rossets  
Stainless Steel



	Code.	Page.		Code.	Page.		Code.	Page.
	10	18		12	40		14T	56
	20	20		13	42		15	60
	30	24		50	46		16	64
	40	28		60	48		Milan <i>Tik Brass</i>	78
	80	32		60	50		Monaco <i>Tik Brass</i>	96
	90	36		14	54			
	10P	19		30P	25		90P	37
	20P	21		80P	33		60P	51

									
		<i>Tik Brass</i> Monaco E1	<i>Tik Brass</i> Monaco E2	<i>Tik Brass</i> Monaco EP	<i>Tik Brass</i> Monaco E3	<i>Tik Brass</i> Monaco E4	<i>Tik Brass</i> Monaco E4	<i>Tik Brass</i> Monaco E4	
Code.	11P	E1	E2	EP	E3	E4	E4	E4	
Page.	68	90	92	96	98	102	108	108	
									
				<i>Tik Brass</i> Royal	<i>Tik Brass</i> King 3	<i>Tik Brass</i> King 2	<i>Tik Brass</i> Royal		
Code.	AL-A	AL-B	PH	Royal	King 3	King 2	Royal		
Page.	72	73	74	80	83	85	86		



Code.	10	10	10	Diamond	PL	Diamond	G	Rod
Page.	112	116	118	121	122	123	124	126



Code.	C	300	ST	CLW	400 - 500 - 600	HST
Page.	128	130	132	133	135	138



**TIKHANDLE**

Since 1999

*Catalogues and products are subject to improvements.*

*Colors and pictures in the catalogue are not binding and may slightly differ if compared with the true product since they are obtained by a printing process.*

*Possible differences between ready-made product and its representation cannot cause any complaint, since the purchase order is the only binding reference document.*

*Models are trade-marks registered.*

*All rights reserved ©TIKHANDLE Central Office.*

*Design & Photography by **TIKSTUDIO**. 2022, August.*

**TIKHANDLE**<sup>®</sup>  
Since 1999